



Developing a Skate park for Kangaroo Flat

Community consultation
and outcomes summary



CITY OF GREATER
BENDIGO



The purpose of this report is to summarise the engagement process and present an analysis of the outcomes. These outcomes have informed the final concept plan which is reflected and presented here.

The decision to build a skate park was made by the City in 2017 in response to calls from the community for such a facility to serve the Kangaroo Flat area. In May 2021, Enlocus was engaged to deliver a concept design for a new neighbourhood/ local level skate park.

Final concept design

Overall, this could be considered a tale of two consultations. One received primarily younger respondents and their families, while one was primarily older, more advanced users. This gave us great data with respect to the zones we were creating – allowing the first consultation to inform the beginner area, and the second to inform the intermediate.

Moving forward, the project team revised the intermediate zone to a street-styled park to meet users wants and needs. We revised the previous Schematic Design street style park (previously received well by more experienced users) to have greater consideration of unique elements, user space and lines.

The beginner area has remained as is, considered suitable for purpose based on the consultation feedback in both rounds.

Artist's concept

3D aerial view



Key

- Intermediate
- Amenity
- Beginner

- | | | | | |
|--|--|--|---|--|
| ● 1 600h Flatbank | ● 7 350h Round Flatbar with Banked Sides | ● 13 400h Hubba/Outledge | ● 19 Secluded Seating Area (Provisional Shelter) | ● 25 150h Kerbtop |
| ● 2 300h Jersey Bank Extension | ● 8 400h Mellow Flatbank with 200h Long Ledge | ● 14 450h Flatbank | ● 20 Secondary Access Path | ● 26 Double 450h/350h Mogul Pumps |
| ● 3 750h Brick 45deg Flatbank "SF Chinatown Bank" | ● 9 750h Banked Quarterpipe | ● 15 Main Access - DDA Path to Shelter/Intermediate | ● 21 Drink Fountain | ● 27 0h to 600h Escalator Quarterpipe |
| ● 4 450h Flatbank Splayed Hip | ● 10 600h Flatbank with 300h Polejam | ● 16 Seating Steps from Intermediate to Beginner | ● 22 Recycle and Rubbish Bin | ● 28 600h Quarterpipe |
| ● 5 300h "Nugget" Multidirectional Wallie | ● 11 450h Round Downrail/Outrail | ● 17 Central Bespoke Shelter with Seating | ● 23 Community Art Graphic | ● 29 600h Mellow Roll-In |
| ● 6 200h Manual Pad with Flatbank | ● 12 600h Flatbank | ● 18 Informal Boulder Seating | ● 24 600h Curved Mellow Flatbank | |

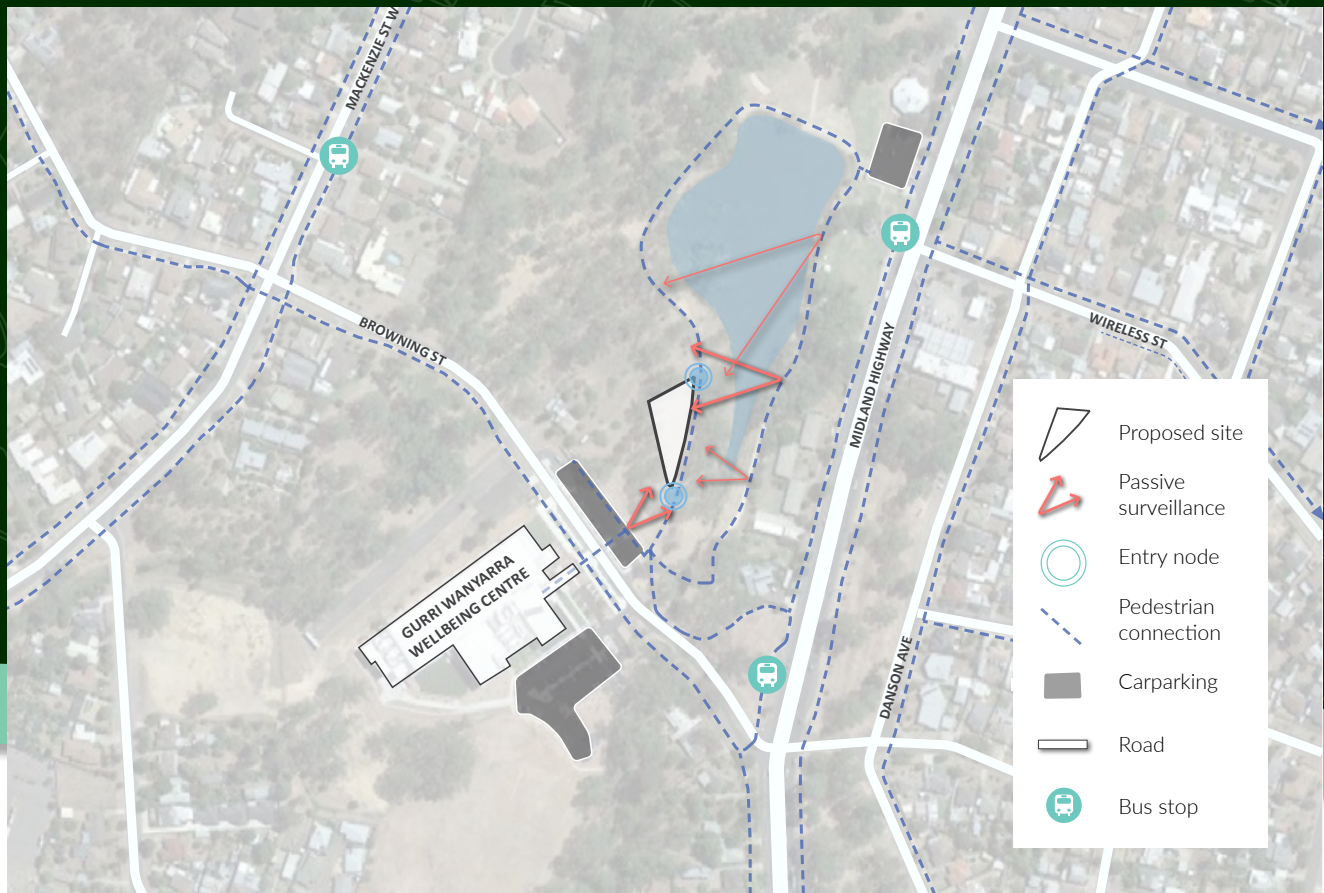
Artist's concept

Intermediate area elements



Artist's concept

View from mini-ramp to shelter



Where is the proposed skate park located?

Kangaroo Flat was identified as the next priority site for a skate park as part of the City of Greater Bendigo Skate and BMX Strategy and work began on the project in 2017.

The proposed project site is located along the Bendigo Creek Trail in the Gateway Park area, on Crown Land.

Consultation methodology

The first stage of community consultation took place from August 11 to September 20, 2021 and focused on feedback on two schematic skate park design options, along with supporting infrastructure such as seating, drinking fountains, public art and shade. The findings from this stage of consultation informed a draft concept plan and next stage of community consultation. The second consultation stage ran from December 1 to 15, 2021, seeking feedback on the draft concept design, informing the final concept for the proposed Kangaroo Flat Skate Park.

Over 150 people were directly involved in the consultation process. The demographic of respondents was diverse and included skate boarders, scooter riders, roller skaters, inline skaters, bmx and mountain bike riders, local residents, parents, grandparents, young people and adult skaters.

The engagement process for both stages involved:

- Letters to residents in the immediate proximity to the proposed location in Kangaroo Flat Bushland Reserve
- 1,400 community bulletins to residents in proximity to the proposed location
- Hardcopy design questionnaire feedback forms at key community locations
- Project detail on Let's Talk
- Online design questionnaires and Share a Story on Let's Talk
- Social media posts
- Media releases
- Posters distributed to schools and community organisations
- School newsletters, promotion of project within schools
- Two online drop-in sessions
- Individual meetings on site with residents seeking additional information
- Individual email responses to emails received
- Five online workshops with 30 primary school students
- Presentation and question time to the Youth Council
- Participation in the Gender Impact Assessment
- Pop Up Listening Post at Gurri Wanyarra

First round of consultation

Young people, people of diverse genders and women were particularly important to hear from as they are under-represented in skate park use as well as consultation around designing skate parks. Listening to under-represented voices provides information and direction to design elements of a skate park that may not have been prioritised in the traditional skate park designs. Outcomes include innovative and welcoming elements.

Traditional skateboarders were also important to hear from, in order to understand their experiences of other skate parks – what works and doesn't work for them, what they felt was missing or repetitive, and their style preferences.

This round was greatly affected by COVID-19 lockdowns, and the face-to-face opportunities to meet with schools and the community moved online in order to meet restrictions.

Some residents, while supportive of the idea of a skate park, were concerned about the location, car parking and increased traffic on Browning Street. All of these aspects were considered in choosing the location, and will be managed throughout the project.



Round 1 outcomes

Overall, respondents primarily favoured “flow” styled parks, reflected in certain elements being voted highly such as Moguls and Corner Berms. Other classic park elements such as Flatbanks, Flatbank to Kerbs and Quarterpipes were similarly high.

The DIY-style park received a positive response with 80% of respondents approving of the design. The street style park received 71% approval, predominantly from more experienced riders, however elements associated with this style of design did not rate highly (eg. stairs and ledges).

The majority of respondents were supportive of separating the park into two separate zones aimed at varying ages, abilities and skill levels. Some younger respondents mentioned their own negative experiences of skate park elements being too big and challenging to learn on, or being in a high use area that was intimidating to venture in to. Many parents also expressed similar sentiments with existing skate parks, and appreciated the idea of a safe, separate zone for their children.

Some intermediate/advanced skateboarders approved as well, saying two zones would stop the skate park becoming congested with users wanting or needing different things (eg. beginner riders staying at the bottom of transitions therefore preventing more experienced users from entering).

However, some older, more advanced skateboarders did not approve, noting that the space used to interface between the two zones was wasted, and could be used instead, to fit in more skate function.

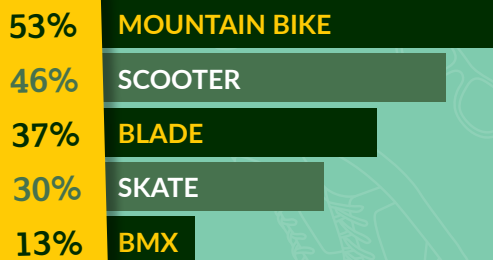
Based on the feedback heavily favouring “flow” styled park and elements, the two Design Options were put aside to provide a flow-styled park, with both zones following this style. The beginner zone was designed as a scaled-down version of the intermediate zone to deter “crossing over” between zones in search of a different experience. For example, street users in the intermediate zone also occupying the beginner zone to use the miniramp, potentially intimidating new and younger users from being comfortable in the space.

There was a strong response from roller skaters for a large, flat area alongside the skate park for roller skating. While this is beyond the scope of this project, it is worth exploring the merit of a space suited to the roller skating community.

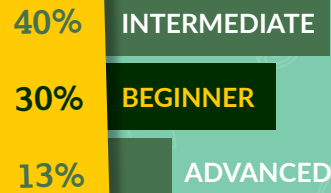
School workshop results

Users: 30 school students aged 5-13

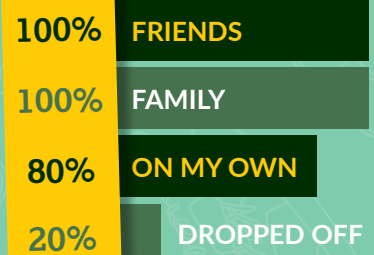
What is your riding style?



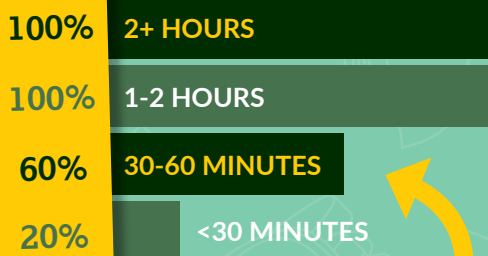
What is your experience?



Who do you go with?



How long do you stay?



- "I prefer to go in mornings... it's quieter... the more advanced people are there during the day"
- "I go with my Nan, but sometimes there isn't anywhere for her to sit - there should be areas for everyone"

Favourite elements:



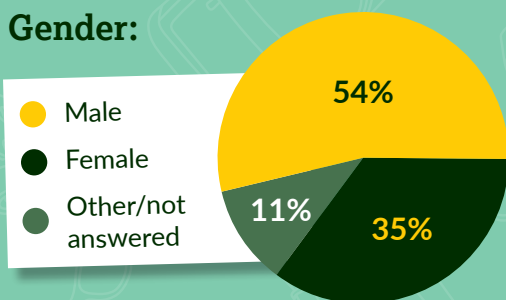
Comments

- Participants were likely to go to riding spaces with family, or with friends (and their families). Some participants spoke about wishing for extra seating areas for their parents, grandparents outside of active area
- Similarly, many requested additional park elements, ie. shelters, drink fountains, BBQ facilities, etc. that could be used by whole of community
- Flow styled parks were generally best received. Participants who expressed interest in wanting to ride were also generally more excited in learning/using flow styled parks
- Users were overall positive about separating the beginner and intermediate areas into two. Some spoke of being intimidated by current, all-in-one skateparks, suggesting a major barrier for entry for new users. Some participants also asked for this separation to be made explicit through signage
- Participants all rated dynamic painted finishes, mixes of materials, etc. highly. Some highlighted opportunity for art from local Aboriginal artists. They hoped the skatepark would be vibrant and engaging

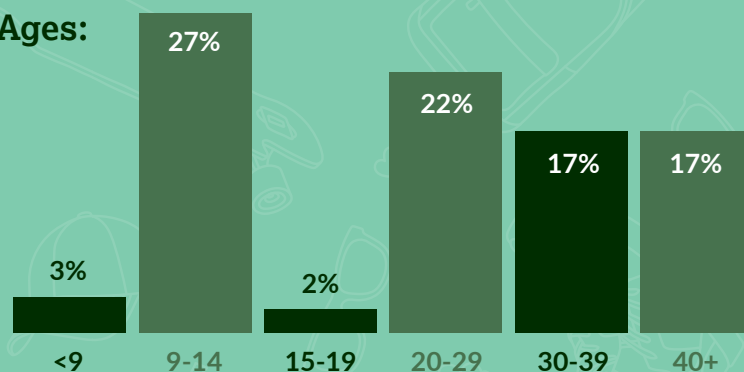
Online 'Let's Talk' results

Users: 59 responses

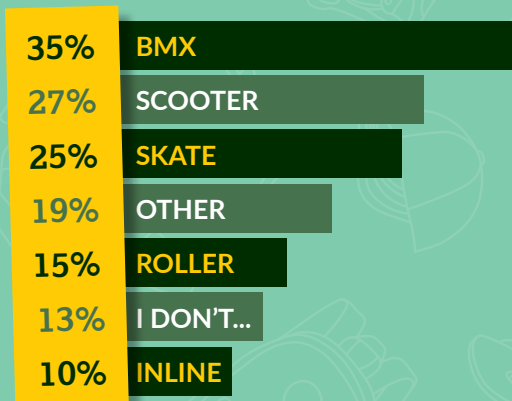
Gender:



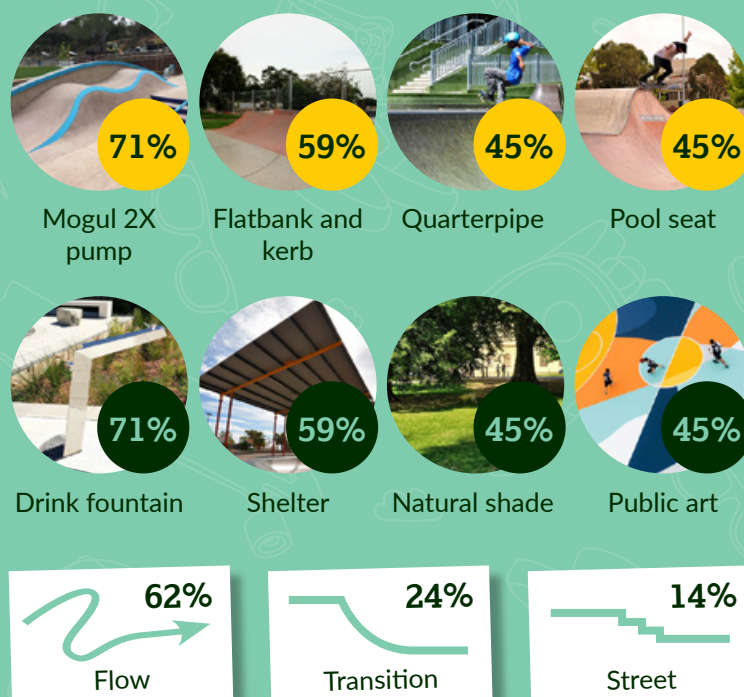
Ages:



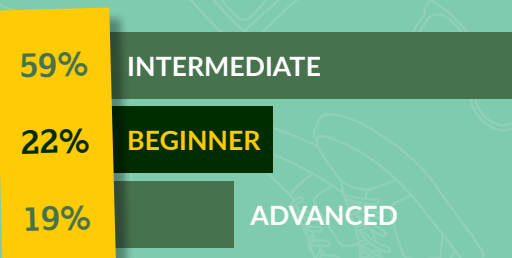
What is your riding style?



Favourite elements:



What is your experience?



Comments

- "My three young children aged 7, 5 and 4 prefer the free flowing style as it is more accessible for them to use compared to a street park design. It would be useful to have an area that is more flowing for smaller children (beginners) and scooters, with the main component suiting intermediate level and above" - Kellie, 43
- "I love how you have the two different areas, it will stop the space getting super congested. The street design looks fun with its variety, the diy option seems to have a lot of the same obstacles, will get repetitive/boring" - Brandon, 28
- "There should be a area for adults teens and kids because its hard for the little kids when there are bigger kids around and it might scare the younger children" - Ethan, 11
- "The most important things for me is to get the basics right, there needs to be a good ledge, good many pad, good banked hip and one nice quarter pipe" - Fin, 24
- "What I found from being in Epsom when that was opened is that the little kids struggle to have a space when it's busier with older kids and means it's not useable" - Jess, 37

Second round of consultation

The second round of consultation consisted of a second survey on Let's Talk and a pop-up Listening Post at Gurri Wanyarra Wellbeing Centre on a Saturday morning aligning with swimming lessons for young people.

Round 2 outcomes

Respondents from sports other than skateboarding and parents of young people were supportive of the design, while highlighting additional infrastructure they would like to see included. This was especially reflected in the pop up session at Gurri Wanyarra where young participants and their parents were positive and excited about the beginner area design.

Let's Talk submissions received a very different demographic of respondents when compared to the first, and to the pop up session. Users were predominantly male (+20% increase) aged 20-29 (+26% increase). The majority were intermediate and advanced skateboarders.

No respondents were aged 14 or younger (-30% decrease) and no users considered themselves a beginner rider (-22% decrease).

This change in demographic is likely attributed to an advanced skateboarder sharing the design in his Instagram, and mobilising older skateboarders to participate in the consultation. The majority of the respondents were still from the Greater Bendigo area.

The majority of the respondents were disappointed by the lack of street elements. The decision to focus purely on "flow" elements after the first consultation resulted in the omission of many "typical" elements – eg. standard flatbar, ledge, flatbank, hips etc. This was reflected in certain elements being voted highly on Let's Talk including flatbars, ledges, stairs/hubba combos, kicker to kicker gaps.

Some intermediate users who responded this round were generally understanding and in support of the smaller beginner area. While knowing it wasn't for them, they acknowledged its purpose and need.

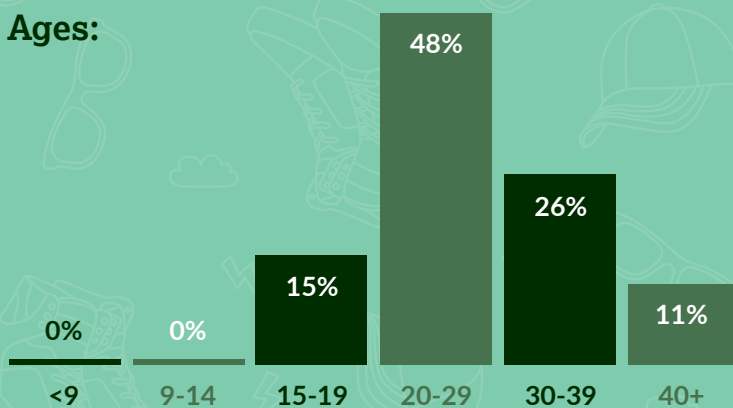
This divide needed to be resolved in the final concept design.



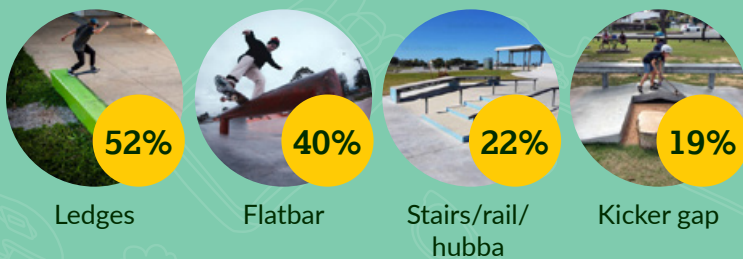
Online 'Let's Talk' results

Users: 27 responses

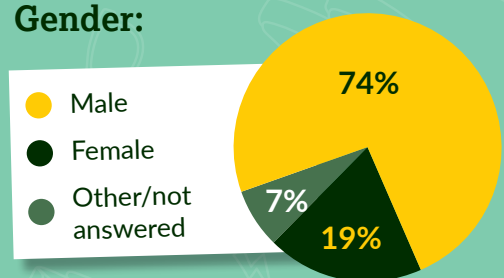
Ages:



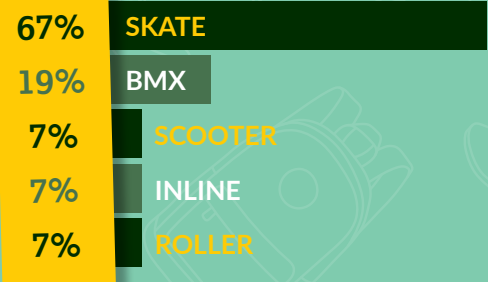
Favourite elements:



Gender:



What is your riding style?



What is your experience?



Comments

- "In terms of for little children this skatepark is decent. However this skatepark does not cater to anyone who wishes to travel for skateboarding or bmx from the city due to the limited challenging aspects of the park" - Ryan, 20
- "There isn't enough street spots, like rails and stair sets and ledges, Manuel [sic] pads and what not. I reckon there's too much ramps" - Riley, 17
- "This park is a glorified pump track... The street design that was drafted with this one was AMAZING, filled with unique and interesting obstacles that would make the park fun and attractive. This park will leave riders uninspired and get boring very quickly" - Gus, 21
- "Transition is great but we already have so much of it here in Bendigo... it looks like it has been designed for young kids and no one but young kids, which is great but it feels like a playground" - Matt, 22
- "Some things to flag: Open flat area for practicing non-ramp skating. There is lots of little areas of flat, but these could get jammed up with skaters trying to practice in the way of skaters using ramps. A separate area for beginners and flat surface skaters would be much safer." - Toni, 34
- "I can see quarter pipes, tapered quarter pipes and moguls in both areas that are similar in layout and height. Not much diversity or progression built in and there isn't any basic elements like a flat ledge or rail. These are the building blocks for most tricks on any obstacle." - Darren, 45
- "The amount of seating area around the outside is excellent, and will enable parents to comfortably supervise their younger kids. The separate areas for beginner and intermediate are also excellent" - Kellie, 43

Next steps

The City would like to give an enthusiastic thank you to all community members who contributed to the development of the Concept Plan whether that was online through Let's Talk, email, virtual meetings or through video workshops, or in person through the pop up or meeting on site. While we aren't able to incorporate all ideas for a variety of reasons, your input is invaluable and has been considered throughout the Concept Design.

We would particularly like to thank the young people and other diverse people who participated in the consultation, as important voices in developing a skate park for beginner and intermediate users and potential users.

We would also like to thank the intermediate and advanced skateboarders, particularly in the second round of consultation, who helped to create clear ideas of what they wanted in the intermediate area.

The initial external cost estimate for the skate park, in March 2022, is \$650,000 based on concept level design. Skate park construction is a specialised trade and costs are prone to fluctuation. This is an estimate of probable costs only, and all components of which are subject to escalation in construction, labour and material costs.

From here, we will undertake the budget process for the 2023/2024 financial year alongside land management requirements and negotiations. This project may require successful grant funding in order to proceed.



Artist's concept

Signage